

## Inline unit ASEPTconnect for clamp-connection per DIN 11864 Type series MZ2300



### Application area

- Pharmaceutical industry
- Biotechnology
- Food industry
- Brewing industry
- Chemical industry

### Features

- Inline unit with aseptic clamp-connection per DIN 11864-3, groove side, dead-zone free
- Process connection:
  - pipe ends
  - clamp-connection
- Seals gap-free by means of an O-ring
- Fast and accurate mounting of the devices
- Various pipe diameters available
- Hygienic design
- Suitable for CIP or SIP procedures
- Pipe ends suitable for orbital welding
- Delta ferrite content < 0.5 %

### Options

- As per UKCA regulations
- Further process connections upon request
- Customised solutions

### Application

The ASEPTconnect Inline unit allows to install measuring instruments into pipes taking all requirements related to successful SIP and CIP procedures into account. The instrument connection is designed as Aseptic clamp-connection per DIN 11864-3.

## Technical data

### Constructional design

|                   |   |
|-------------------|---|
| Design:           | Inline unit with device connection<br>Horizontal mounting position                    |
| Nominal pressure: | depending on process connection PN 40 / PN 16   |
| Torque            | 15 Nm   |
| Material case:    | Stainless steel mat.-no. 1.4435 (316L)<br>Delta ferrite content < 0.5 %               |
| Material O-ring:  | EPDM, USP class VI (incl. certificate),<br>FDA listed<br>Other materials upon request |
| Type plate:       | Laser marking   |

### Pipe diameter

|                               |  |
|-------------------------------|--|
| Pipe diameters per DIN 11866: | model A: DN 10 – DN 32<br>model B: ISO 13.5 – ISO 33.7<br>model C: 1/2" – 1 1/2" |
|-------------------------------|--|

Further pipe diameters upon request

### Process connection

- Pipe ends suitable for orbital welding
- Clamp-connection per DIN 32676

### Device connection

Aseptic clamp-connection per DIN 11864-3, groove side, diameter 50.5 mm  
(model A: DN 32, model B: DN 33.7, model C: 1")  
Suitable diaphragm seal, aseptic design per DIN 11864-3, coupling side, Type series DL5, see data sheet D5-024

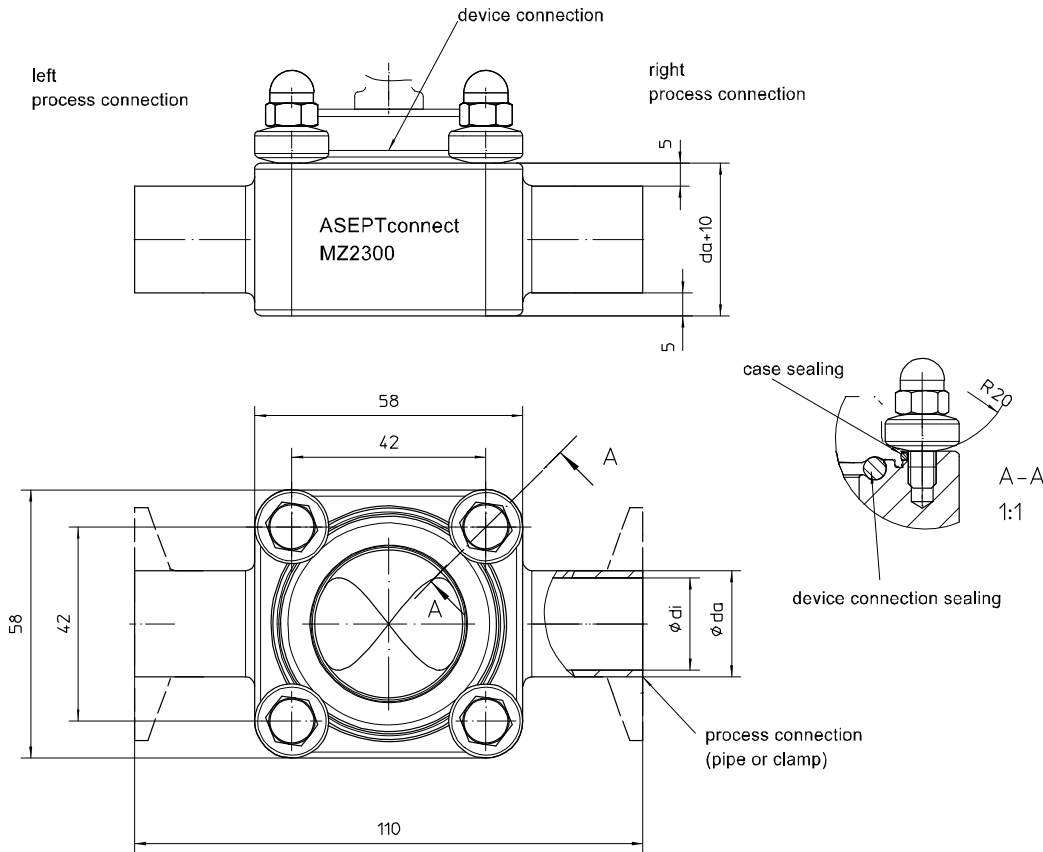
### Hygienic design

|                    |   |
|--------------------|---|
| Surface roughness: | standard:<br>wetted parts $R_a < 0.8 \mu\text{m}$ ,<br>external surfaces approx. $0.8 \mu\text{m}$<br>optional:<br>wetted parts $R_a < 0.4 \mu\text{m}$ ,<br>external surfaces approx. $0.8 \mu\text{m}$<br>optional: electropolished |
|--------------------|---|

### Temperature ranges

|         |              |
|---------|--------------|
| Medium: | -10...140 °C |
|---------|--------------|

## Dimensions



All dimensions are in mm

### Pipes per DIN 11 866 model A, DIN 11850

| DN | da | di | suitable diaphragm seal                             | device connection   |
|----|----|----|---|---|
| 10 | 13 | 10 | see data sheet D5-024<br>Type code:<br>DL5120-S1203 | clamp-connection per DIN 11864, groove side<br>DN 32, Ø 50.5 mm,<br>O-ring 28 x 3.5 |
| 15 | 19 | 16 |   |   |
| 20 | 23 | 20 |   |   |
| 25 | 29 | 26 |   |   |
| 32 | 35 | 32 |   |   |

### Pipes per DIN 11 866 model B, ISO 1127

| DN   | da    | di    | suitable diaphragm seal                             | device connection   |
|------|-------|-------|---|---|
| 13.5 | 13.50 | 10.30 | see data sheet D5-024<br>Type code:<br>DL5210-S1203 | clamp-connection per DIN 11864, groove side<br>DN 33.7, Ø 50.5 mm,<br>O-ring 32 x 5.0 |
| 17.2 | 17.20 | 14.00 |   |   |
| 21.3 | 21.30 | 18.10 |   |   |
| 26.9 | 26.90 | 23.70 |   |   |
| 33.7 | 33.70 | 29.70 |   |   |

### Pipes per DIN 11 866 model C, ASME-BPE

| DN     | da    | di    | suitable diaphragm seal                             | device connection  |
|--------|-------|-------|---|--|
| 1/2"   | 12.70 | 9.40  | see data sheet D5-024<br>Type code:<br>DL5310-S1203 | clamp-connection per DIN 11864, groove side<br>DN 1", Ø 50.5 mm<br>O-ring 24 x 3.5 |
| 3/4"   | 19.05 | 15.75 |   |  |
| 1"     | 25.40 | 20.10 |   |  |
| 1 1/2" | 38.10 | 34.80 |   |  |

## Order details

### Inline unit ASEPTconnect for clamp-connection per DIN 11864, Type series MZ2300

| Order details ASEPTconnect |                          |  |   |
|----------------------------|--------------------------|--|---|
| <b>MZ2300</b>              | Inline unit ASEPTconnect |  |   |
| <b>A1</b>                  | design                   | one-sided device connection (PN 40)                                    |   |
| <b>K10</b>                 | process connection       | double-sided pipe ends, weldable (PN 40)                               |   |
| <b>K21</b>                 |                          | double-sided clamp-connection DIN 32676<br>(model A, model B, model C) | Ø 25 mm (PN 16)   |
| <b>K22</b>                 |                          |  | Ø 34 mm (PN 16)   |
| <b>K23</b>                 |                          |  | Ø 50.5 mm (PN 16)   |
|                            |                          | <b>model A, DIN 11850</b>  |   |
|                            | Nominal width            | pipe dimensions  | clamp-connection per DIN 11864, groove side<br>DN 32; Ø 50.5 mm   |
| <b>D112</b>                | DN 10                    | 13 x 1.5   |   |
| <b>D113</b>                | DN 15                    | 19 x 1.5   |   |
| <b>D114</b>                | DN 20                    | 23 x 1.5   |   |
| <b>D115</b>                | DN 25                    | 29 x 1.5   |   |
| <b>D116</b>                | DN 32                    | 35 x 1.5   |   |
|                            | <b>model B, ISO 1127</b> |  | clamp connection per DIN 11864, groove side<br>DN 33.7; Ø 50.5 mm |
|                            | Nominal width            | pipe dimensions  |   |
| <b>D212</b>                | DN 13.5                  | 13.5 x 1.6   |   |
| <b>D213</b>                | DN 17.2                  | 17.2 x 1.6   |   |
| <b>D214</b>                | DN 21.3                  | 21.3 x 1.6   |   |
| <b>D215</b>                | DN 26.9                  | 26.9 x 1.6   |   |
| <b>D216</b>                | DN 33.7                  | 33.7 x 2.0   |   |
|                            | <b>model C, ASME-BPE</b> |  | clamp connection per DIN 11864, groove side<br>DN 1"; Ø 50.5 mm   |
|                            | Nominal width            | pipe dimensions  |   |
| <b>D312</b>                | DN 1/2"                  | 12.70 x 1.65   |   |
| <b>D313</b>                | DN 3/4"                  | 19.05 x 1.65   |   |
| <b>D314</b>                | DN 1"                    | 25.40 x 1.65   |   |
| <b>D315</b>                | DN 1 1/2"                | 38.10 x 1.65   |   |
| <b>F2</b>                  | insertion length         | 110 mm   |   |
| <b>HY</b>                  | surface roughness        | hygienic design, internal Ra ≤ 0,8 µm, external ≤ 0.8 µm               |   |
| <b>HY04</b>                |                          | hygienic design, internal Ra ≤ 0,4 µm, external ≤ 0.8 µm               |   |
| <b>E7.4</b>                | material                 | stainless steel mat.-no. 1.4435 (316L), delta ferrite content < 0.5 %  |   |
| <b>H2.1</b>                | gasket                   | EPDM FDA listed (incl. certificate), USP Class VI (incl. certificate)  |   |

#### Additional features (to be indicated in case of need, only):

|              |                                       |  |  |
|--------------|---------------------------------------|--|--|
| <b>W4035</b> | Inline access unit electropolished    |  |  |
| <b>W1020</b> | material certificate per EN 10204-3.1 |  |  |
| <b>W2660</b> | as per UKCA regulations <sup>1</sup>  |  |  |

Order code (example): MZ2300 - A1 - K21 - ...

<sup>1</sup> Not possible with internal pipe diameter > 25 mm